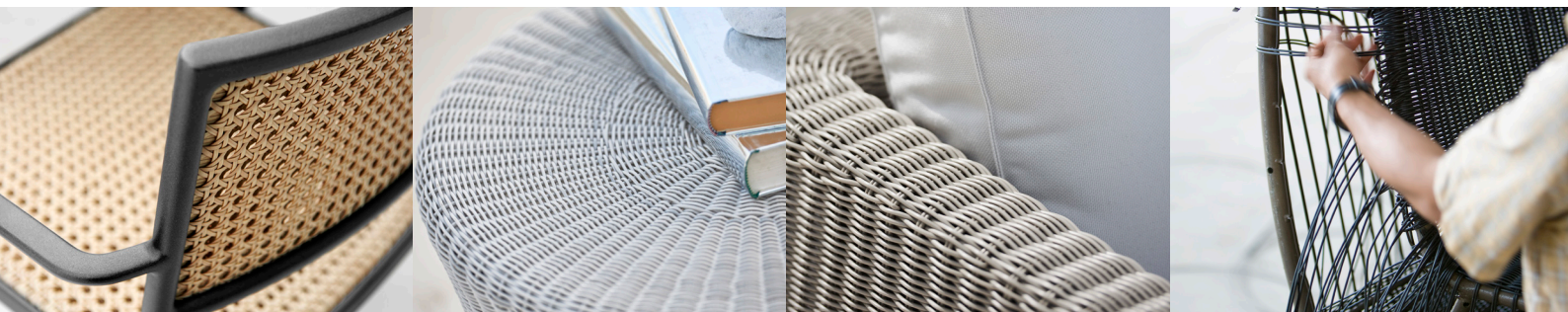


# Cane-line Weave®

## Material, Maintenance & Storing



### Material

Cane-line Weave® is a fibre made from highly durable, solution-dyed polyethylene (PE), which is ideal for outdoor use, because it withstands moisture and large variations in temperature. Both the structure of the fibres and the weave ensure elasticity and optimal sitting comfort. The durable material is UV-resistant and requires minimal maintenance. Cane-line Weave® has been developed to withstand climate conditions all over the world and the material will retain its colour and shape for many years. All products are hand-woven with the Cane-line Weave® fibre, which can vary slightly in colour, creating a nice contrast in the surface of the weave. This gives the furniture a unique, natural and exclusive look.

### Maintenance & cleaning

Because the product is used outdoors over extended periods of time, regular cleaning with a soft brush and soapy water is important. This ensures the removal of superficial soil and debris, such as leaves, berries, pollen and bird droppings, before they have a chance to build up and become more difficult to remove. Alternatively, the product can be cleaned with a high-pressure cleaner set at moderate.

### Storing

There are several ways to properly store your furniture in autumn and winter months for maximum protection and to make spring cleaning easier.

- 1) It is best to store furniture indoors.
- 2) Alternatively, it can be stored on a covered terrace, patio or carport, where it is protected from the elements.
- 3) Finally, furniture can be stored outdoors under a furniture cover. Please note, however, that condensation can form under the furniture cover, which can cause mould and mildew. Therefore, make sure to lift the cover away from the furniture to ensure proper air circulation and minimise condensation.

### Variants



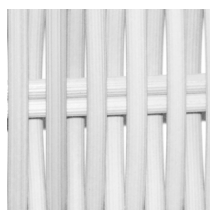
Black (LS)



Natural (LU)



Taupe (LT)



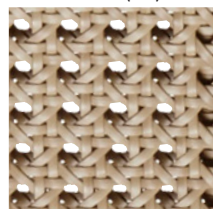
White grey (LW)



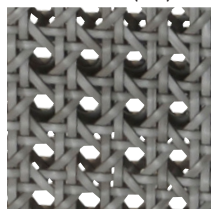
Mocca (LB)



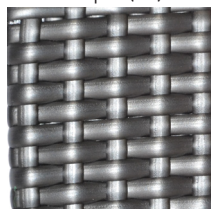
Graphite (LG)



Natural (ALDU)



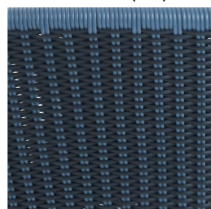
Light-grey (AIDL)



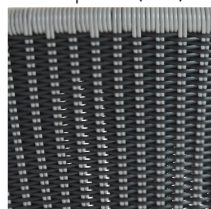
Graphite (GSFTG)



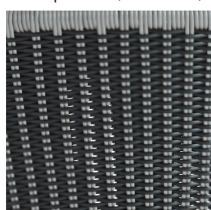
White (AWAW)



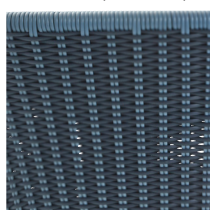
Midnight blue/  
dustyblue (BCT)



Grey/light grey  
(GIT)



Grey/light grey  
(GIAL)



Midnight blue/  
dustyblue (BCAB)

For further questions, please contact [info@cane-line.com](mailto:info@cane-line.com) or visit [Cane-line.com](http://Cane-line.com)