



SITS

public
commercial furniture by SITS



for the spaces *we share*

Designing furniture for public spaces come with high demands for quality and durability. But we believe there's more to the story. To us durability is as much about creating timeless designs as it is about solid constructions and long-lasting materials. That's why we bring the same passion and dedication into creating furniture for public spaces, as we do for domestic use.



Welcome your guests into a comfortable home away from home.

Create high-quality experiences that go beyond the menu.

Ergonomical design that means business for companies of all sizes.

Design contemporary interiors that will stand the test of time.



30 years is a long time

We look back on a history in which we have found new ways of manufacturing furniture and have gone from a company employing dozens to one employing thousands, with a presence in more than twenty European markets, US and Canada.

And it seems we are not the only ones who recognize that we are on to something. Being chosen to be a supplier to one of the largest home furnishing companies in the world has meant a lot – for developing our business, as well as for the encouraging stamp of approval it brings.



dedicated *to comfort*

A while ago we made a quick calculation and it turned out that roughly 4,000 pieces of SITS furniture found a place in someone's home every day. Today we've probably surpassed that number, but we're just as humbled by the responsibility it brings. You can take comfort in many things. We just never take it for granted.



making furniture *for our planet*

At SITS we are trying our best to improve the way we do business by following GREEN BY SITS strategy. It guides all of our work, from minimising CO₂ emissions in our supply chain, to choosing FSC-certified wood, and making sure we leave no stone unturned in our own plants.



handmade

Quality comes from the human touch. Hands have the power to transfer a design vision into a comfortable experience like no other tool. They make fabric fold and stretch just the way it should. And as SITS, they give the final approval before we send a new sofa off for delivery.



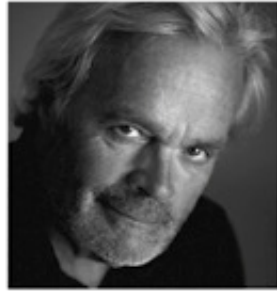
Our design - *your look*

Incorporate your interior into your brand identity.
By adding your own textiles to our furniture, you can
create an environment to match your brand, all the way
down to the cushions of a sofa.

our designers



STEVEN SCHILTE. Started his career as a student at the Design Academy in Eindhoven. From there he has built a successful career as a product designer working for such renowned companies as Jan des Bouvrie, before going freelance. His furniture designs have won several awards, for instance at the »Salon du Meuble« in Paris, the red dot design awards, the interior innovation award, as well as been nominated for the German Design Prize.



NIELS GAMMELGAARD. A renowned designer who studied under Erik Herløw at the Royal Danish Academy of Fine Arts in Copenhagen, Niels graduated in 1970 and went on to cofound Pelikan Design with Lars Mathiesen, designing everything from small pencils to tricycles and hospital beds. Pelikan is best known for its design of commercial furniture, with many of the most prestigious Danish furniture manufacturers—including Fritz Hansen, Bent Krogh, Fredericia and Erik Jørgensen – among its clients.



DAN IHREBORN. A freelance designer since 1991 with specialties in contemporary furniture and office environments, Dan brings a refreshing perspective to SITS: »For me, sofas and easy chairs should give a simple, light and resilient impression, even if they have powerful volume. They should, of course, also be really comfortable and easy to care for. But above all, their design must last longer than ordinary trends.«



IAN ARCHER. With a passion for sculpture and product design, Ian studied furniture in Birmingham, graduating from the School of Architecture and Design in 1989. He then worked in contract furniture before establishing himself as a furniture designer and then a design director in the domestic upholstery industry. With interests that embrace both classic and modern design, Ian formed his own consultancy. Today his work can be seen in such stores as John Lewis, Heal's, Laura Ashley, Harrods and Couch, as well as many other independent retailers across the UK, Europe and Asia.



BÖTTCHER&KAYSER is a Berlin-based studio working in the fields of consumer product, furniture, lighting and interior design. It was founded in 2007 and is running today by Moritz Böttcher and Nikolaus Kayser.

Moritz Böttcher (1978) graduated as an industrial designer at the University of Applied Sciences and Arts in Hannover in cooperation with Dornbracht. He worked at npk industrial design in Hamburg and the Netherlands, Barskidesign in Frankfurt and from 2006 to 2008 for Werner Aisslinger in Berlin.

Nikolaus Kayser (1978) is a qualified carpenter and studied industrial design at Muthesius Kunsthochschule in Kiel. After his diploma he worked for three years as a designer at wiege Entwicklungsgesellschaft. His focus there was in the field of high-quality office furniture, especially on chairs for the German manufacture Wilkhahn.



ANNA NÄSTRÖM. Anna is more or less born on the upholstery factory floor, as she is the daughter in the family that started Sits almost 30 years ago. With a strong passion for Scandinavian design and a soft spot for deep and soft sofas that really embraces you, her first sofa Lill is now released. With a background in fashion- and graphic design as well as years of work with communication at Sits, it was about time to design her first sofa piece and be sure there is more to come.



A person wearing a white long-sleeved shirt and light blue trousers is pulling a black rolling suitcase. The person is standing in a lobby with a marble wall and a white reception counter. The word "hotel" is written in large, white, lowercase letters across the middle of the image.

hotel



Alex

The unique backrest and tilted ergonomic footstool distinguishes our bestseller Alex and adds character to the entire room. And while the good looks may catch your attention, it is the exceptional comfort that will make you return.

Design: Dan Ihreborn.



Alma

Take a thick and springy seat, add a soft back cushion with decorative buttons, and a rounded backrest that seems to embrace you. If you do it right you'll end up with Alma – the quintessence of comfort. Our version also comes with a bonus: Each part of this armchair can be made of a different type of fabric.





Bob

This comfortable armchair is just as soft as it looks. To really round off the design, why not add a matching pouf? Bob is available in fabric or leather, and can be had with metal or wooden legs.

Design: Steven Schilte.

Colin B

Timeless clean lines in an elegantly designed package that is light on the eye whilst being a heavyweight in comfort. The Colin sofa bed has it all and will fit any living space with its timeless appeal. Available in two alternate versions you have the choice of two comforts to suit your preference - both of course executed with equal respect for both practicality and high-level craftsmanship.

Design: Böttcher & Kayser.



Dahlia

Dahlia is an outdoor sofa made only from components tested to withstand the influence of the outdoor elements. As the name suggests, the design is inspired by a flowering garden and its organic and ever-changing natural beauty. With its smooth feminine shapes, rounded armrests and loose hanging cover, Dahlia is modern and relaxed at the same time. Place it pool-side, on the terrace or chill out in your favourite spot of the garden. Of course, you are welcome to bring its elegance inside your house as well! With its removable cover, Dahlia can easily be changed to match the mood of the seasons and extend its longevity too.

Design: Ian Archer.





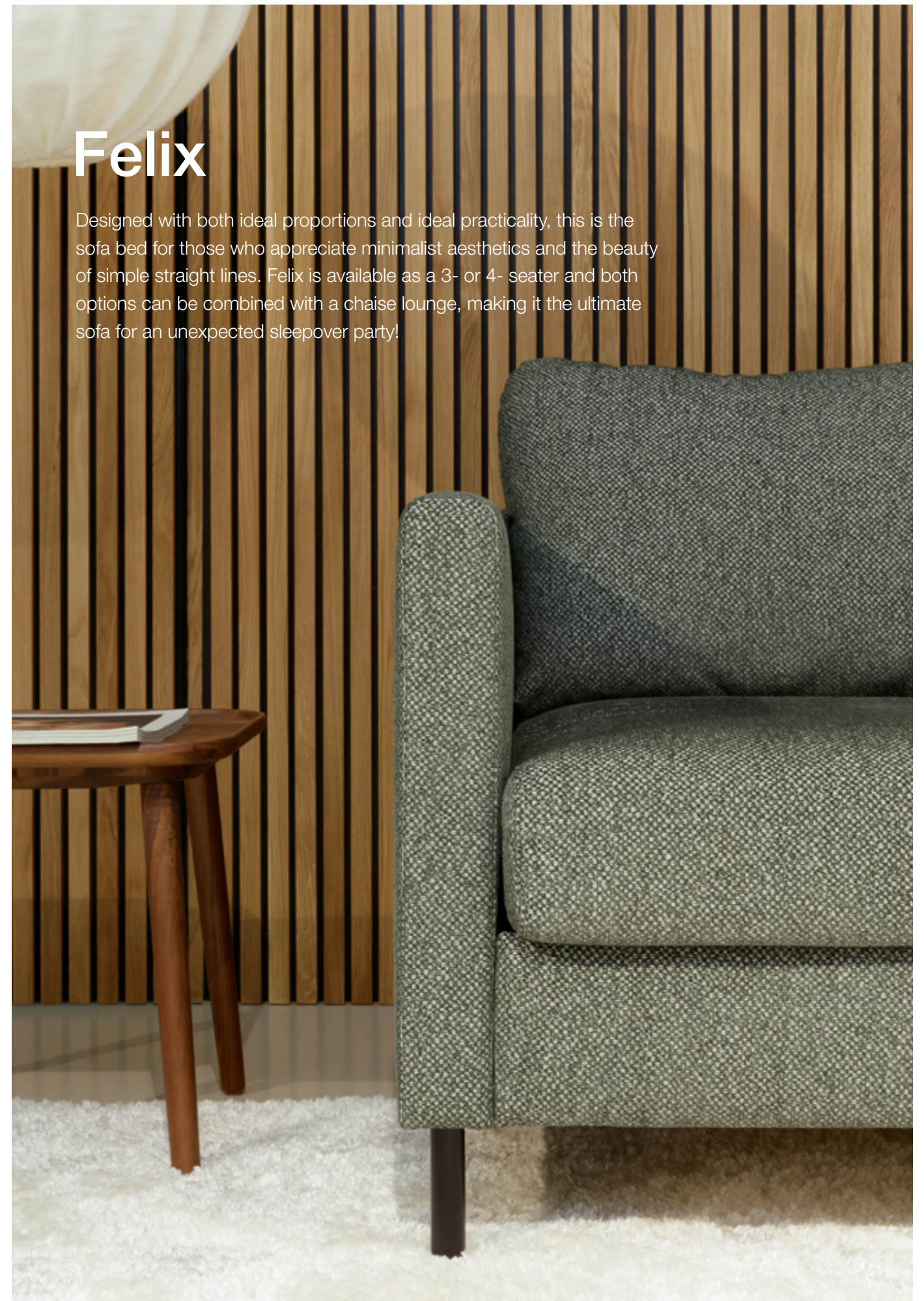
Elsa

A classic look never goes out of style. The perfect proportions with simple, but characteristically shaped armrests make Elsa a contender for the easychair Hall of Fame. A neckrest pillow provides comfort and the high, thin wooden legs add to the slender silhouette.



Felix

Designed with both ideal proportions and ideal practicality, this is the sofa bed for those who appreciate minimalist aesthetics and the beauty of simple straight lines. Felix is available as a 3- or 4- seater and both options can be combined with a chaise lounge, making it the ultimate sofa for an unexpected sleepover party!



Henry

Henry is all class and no complications. It's easy to fall in love with this sofa bed, and it is just as easy to fall asleep in it too. To make it even harder to walk away from this little gem, you get to choose between 4 versions with optional corners and a chaise lounge with a practical storage compartment. Match Henry with your favourite cover and you will realise that you now have an incredible good-looking roommate too.





Impulse

How do you want your sofa to look? Add your own personal touch by choosing metal or wooden legs. You can also choose the type of armrest, add armrest cushions, and opt for a fixed or removable cover. All these touches will help give Impulse your unique style.





Jack

Make no mistake. With its natural wooden frame and distinctive design, Jack is, without doubt, a luxurious armchair with a masculine and contemporary appeal. Designed around the idea of timeless elegance, style and Scandinavian craftsmanship - this is one for the history books. And one for the great storytellers too.

Design: Ian Archer.



Lucy

Challenge accepted. Turn something as practical as a sofa bed into a stylish piece of furniture. And do not forget, it should be just as comfortable and useful for a good nights sleep as for marathon viewing your favourite show. Our sofa bed Lucy passes the test with excellence. Available in two sizes and with optional storage, it should provide plenty of customization options for the picky ones as well.



Lukas

Looks are deceiving. From the outside it looks just like a regular sofa, but inside there's a generous, comfortable bed with a real mattress just waiting to be released in three simple moves. The perfect solution when you don't want your guests to leave, or to help you triumph over the challenges of living in a small space.





Oliver

Defined by its conspicuous metal frame, Oliver is a stylish addition to any room. But this chair is not just about design. Have a seat and you'll soon notice that there's more to Oliver than good looks.





Play

PLAY is the name for our new family of armchairs, consisting of five different designs: POP, TUNE, SOLO, FUNK and SWING. Each of these compact chairs come with a matching footstool and a choice of wooden or metal legs.

Design: Ian Archer.





Shell

Simply stylish. With the shape of the seat and the unusually decorative base we can't think of a better way to describe Shell. The seat of the armchair will surround you with a sense of comfort and peace. The light weight of the armchair is ensured by its base, which can be either a metal frame. In either option, the armchair will shine and bring extra light into your interior.



Siri

Siri puts comfort first. A timeless design, with two different seat depths allows you to relax and unwind. Put your feet up on the footstool and return to the real you.

Design: Dan Ithreborn.



Uma

An armchair design flirting with the 70s.

With a strong identity of imagination, playfulness, style and perfect proportions. This contemporary classic is unique in its character and yet it can blend in with a great variety of spaces and interiors. Make a choice between classic round legs, or a discreet and elegant swivel. Use your imagination and explore the variations of fabrics and watch Uma transform in front of our eyes!

Design: Steven Schilte.



restaurant



Clark

Light on its feet, yet convincingly stable. The design of Clark delivers on the promise made by the shiny steel frame and the equally well-balanced upholstery. A young and dynamic look, that fits well into any interior.

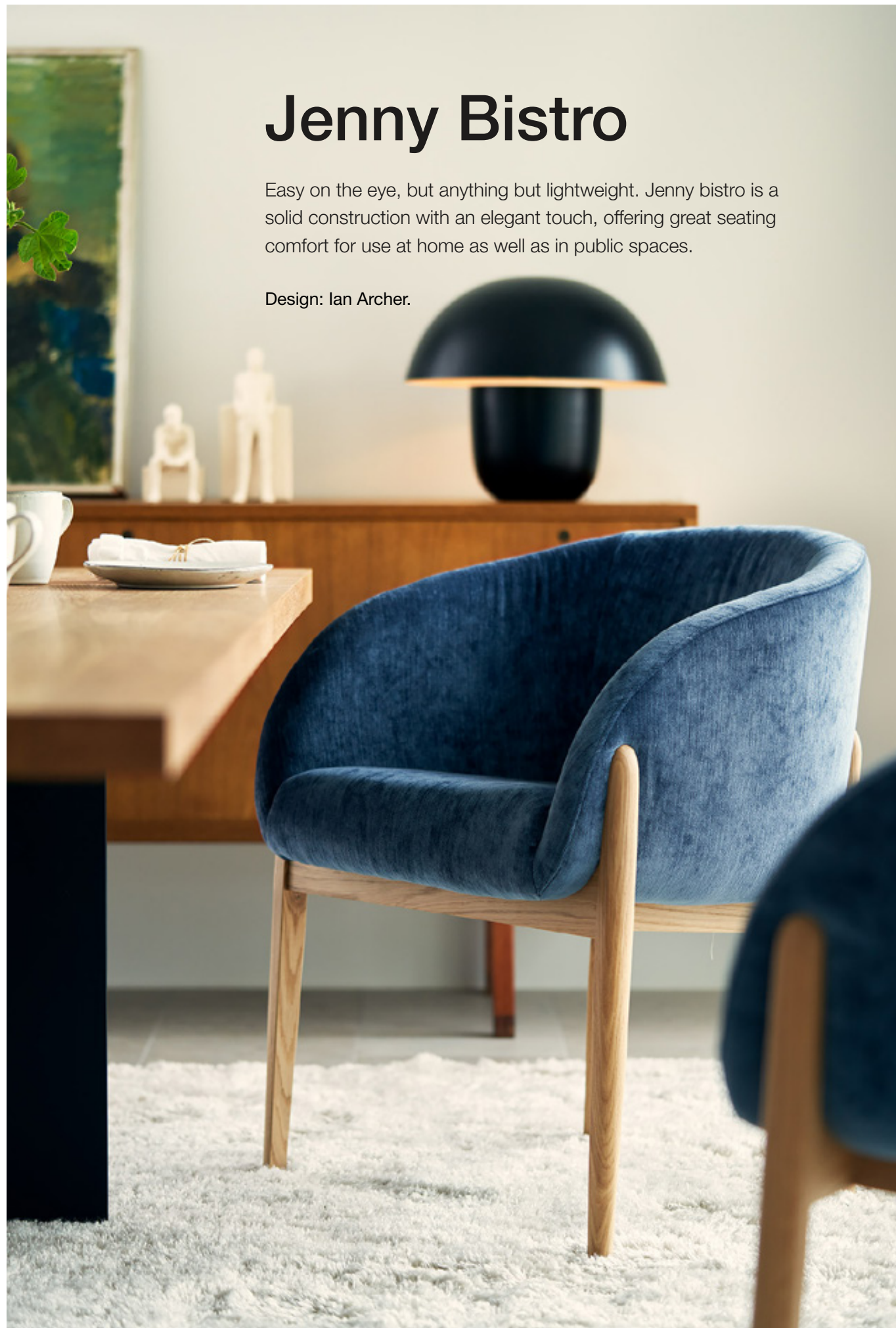
Design: Niels Gammelgaard.



Jenny Bistro

Easy on the eye, but anything but lightweight. Jenny bistro is a solid construction with an elegant touch, offering great seating comfort for use at home as well as in public spaces.

Design: Ian Archer.





Moa Bistro

If you have been looking for a stylish dining chair that doesn't compromise comfort, look no further than the Moa Bistro chair. Designed to match with a wide variety of tables and forms, this contemporary chair will accommodate many longed for dinner conversations we never want to end. Your choice of wooden legs or a metal frame is available "à la carte" to match your unique style and preference! Furthermore all fabric cover options comes with loose covers fastened by velcro for easy removal too.

Design: Steven Schilte.





Mokka

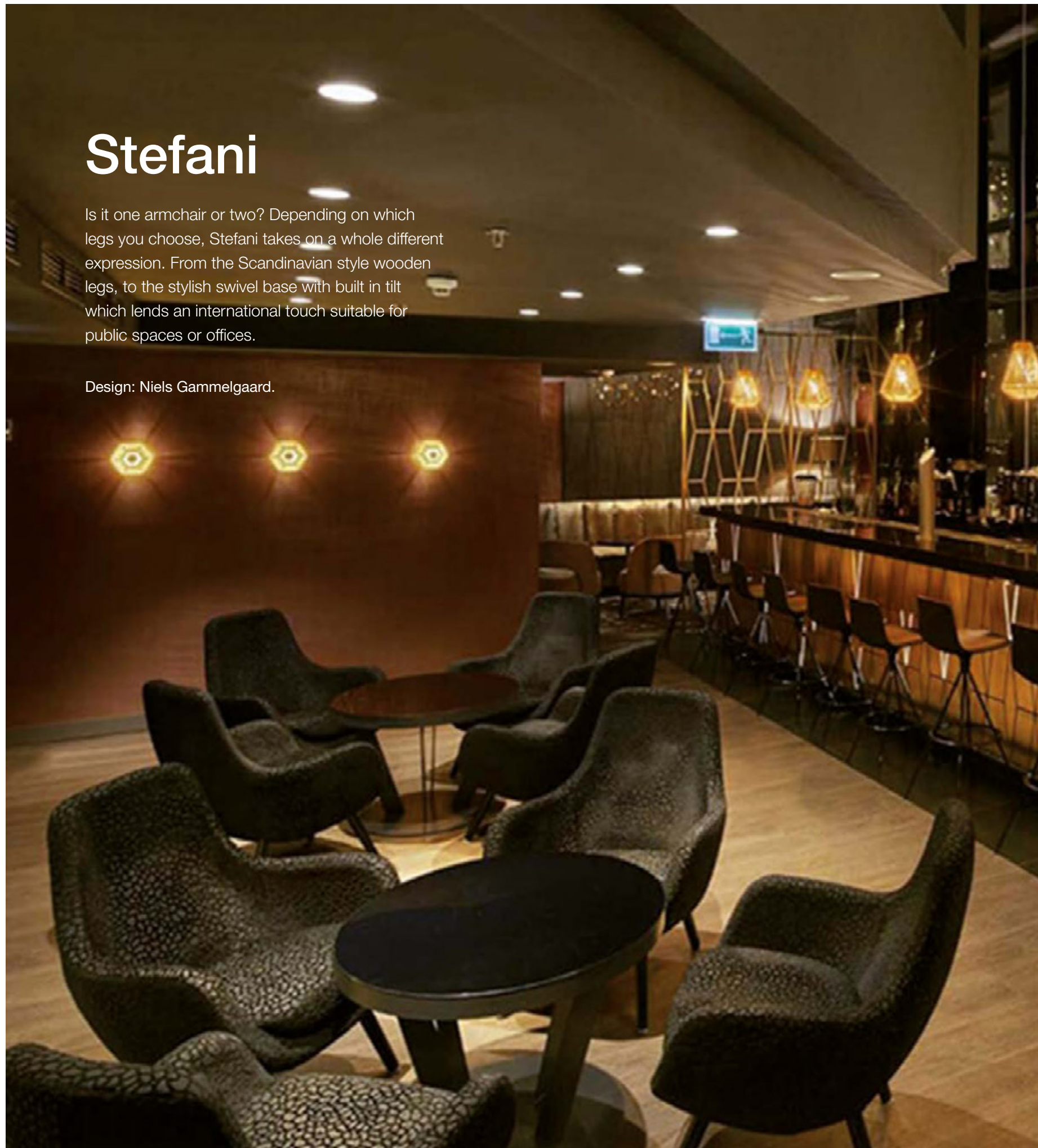
Offering the versatility of a pouffe, but equipped with a profiled backrest for seating comfort, Mokka plays many parts. The handy size means it's easy to move around to wherever you feel there's a need for an extra seat, or just a stylish companion piece of furniture.



Stefani

Is it one armchair or two? Depending on which legs you choose, Stefani takes on a whole different expression. From the Scandinavian style wooden legs, to the stylish swivel base with built in tilt which lends an international touch suitable for public spaces or offices.

Design: Niels Gammelgaard.





Venezia

There's something about Venezia. Maybe it's the enchantingly simple cubic shape, or perhaps it's the gentle, slim legs that give this piece of furniture its subtlety and balanced shape. Either way, we think you'll enjoy the company of it, as much as you'll enjoy the company of others around the table.





office



Clark

Light on its feet, yet convincingly stable. The design of Clark delivers on the promise made by the shiny steel frame and the equally well-balanced upholstery. A young and dynamic look, that fits well into any interior.

Design: Niels Gammelgaard.



Frej

Stripped from all excess and designed around a concept of the contrast between architectural simplicity and inviting softness, Frej stands out from the crowd. With modern, long, sweeping lines and minimalistic aesthetics, it is a sofa that brings a sophisticated and timeless elegance to any high demand interior space or living room. Why not make this sofa even more personal and combine a smooth leather covered frame with natural fabric cushions for a unique contrasting look? With "Frej" the choice of elegance and style is truly yours.

Design: Böttcher & Kayser.



Holly

With a confident stance that is bound to impress, this armchair comes in three different upholstery variants: fabric, leather and a version in fabric with a leather front to create a stylish contrast. Holly is available with a metal or wooden frame.

Design: Dan Ihreborn.





Impulse

How do you want your sofa to look? Add your own personal touch by choosing metal or wooden legs. You can also choose the type of armrest, add armrest cushions, and opt for a fixed or removable cover. All these touches will help give Impulse your unique style.



Jack

Make no mistake. With its natural wooden frame and distinctive design, Jack is, without doubt, a luxurious armchair with a masculine and contemporary appeal. Designed around the idea of timeless elegance, style and Scandinavian craftsmanship - this is one for the history books. And one for the great storytellers too.

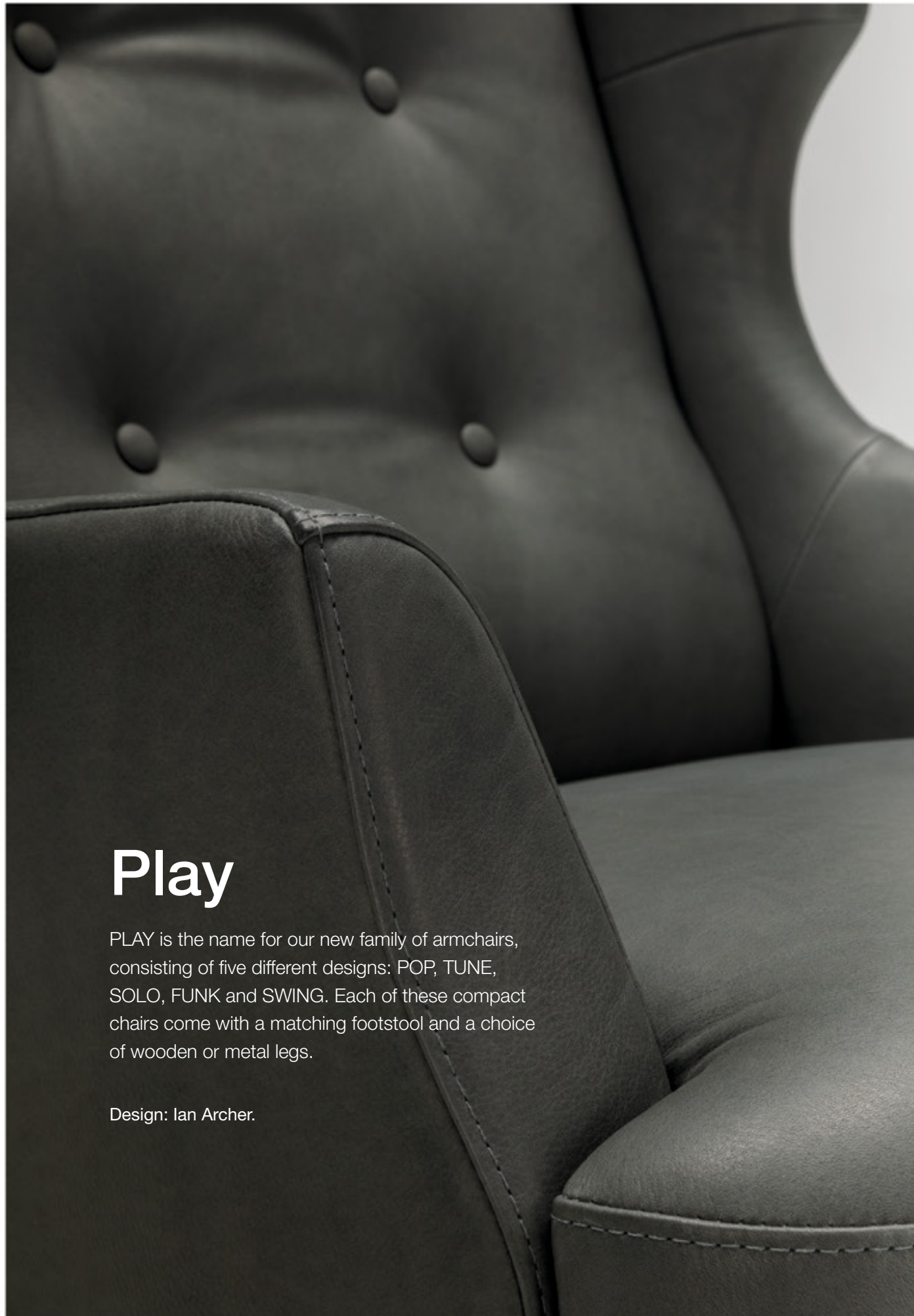
Design: Ian Archer.





Paul

Masculine, sophisticated and very contemporary in its design. Paul embodies an urban modern interior aesthetics with its clean, straight lines that almost seem to float on air. This sofa series is for those looking to make a clear statement of contemporary style in their living space. A confident choice of class and comfort that doesn't make any excuses.



Play

PLAY is the name for our new family of armchairs, consisting of five different designs: POP, TUNE, SOLO, FUNK and SWING. Each of these compact chairs come with a matching footstool and a choice of wooden or metal legs.

Design: Ian Archer.



Valentin

High finish detailing, handcrafted quality and unique Scandinavian design. Valentin fuses the key elements of tufting sofas and combines them into something new and exciting. There is just as great volume to the back and armrests, as there is modern sophistication to its strong identity. Bring out a classic look by matching rich velvets and exposed wooden legs, or give it a modern luxurious twist with a flat weave fabric and metal legs. The choice is yours.

Design: Ian Archer.



residential



Alex

The unique backrest and tilted ergonomic footstool distinguishes our bestseller Alex and adds character to the entire room. And while the good looks may catch your attention, it is the exceptional comfort that will make you return.

Design: Dan Ithreborn.





The sofa is accompanied by Julia armchair.

Charlie

The sleek, light look is created by the distinctive upper front panel and thin seat cushion. But don't let that fool you – this sofa lacks nothing in softness. And with an inspiring range of modules it offers unlimited possibilities, including new funnel-shaped wooden legs.

Design: Steven Schilte.





Hugo

The clue is in the cushions. A high resilient foam guarantees comfort and the smooth look of the seat and rear surface. Hugo also offers the choice of comfort lux or standard cushions with stitching to provide an individual and sensual touch.

Design: Ian Archer.





Isa relax

A recliner is for taking it easy, what else? And no chair proves the point better than Isa, with added points for looking good even when it's on stand-by. Available in a number of different covers and cushioning options, Isa is guaranteed to ease into any interior.

Design: Niels Gammelgaard.





Julia

Can you ever have too much of a good thing? The feather-filled softness of Julia offers you a choice between different comforts, covers and feet – not to mention all the different shapes and sizes on offer. Too much? Surely not.

Design: Dan Iheborn.

Lill

Why make a fuss? With clean, simple lines and a single deep and long seat cushion you've got all you need to create a comfortable, elegant sofa. Add the choice of a fixed cover, or a loose one with a skirt and you've got Lill.

Design: Anna Näsström.



Moa

If you are looking to add a clear identity and character to your room, look no further than Moa. It is Bound to become a contemporary classic, this modern and playful sofa is both laidback and stylish at the same time. The styling is smooth and elegant, and combined with the elegantly curved lines - this sofa carries a unique urban expression. And better yet, it is just as comfortable as you want it to be.

Design: Steven Schilte.



Mynta

Mynta is made to look like you want it to. The simple design invites you to explore colours, fabrics, feet and even different extensions for the backrest. No matter what you choose, it will always be as stylish as it is comfortable. And the high seat will allow for easy access to everyday comfort.

Design: Niels Gammelgaard.





Sally

Kids love to play with cushions. Select your backrest cushion size (small, large or a mix of both) and order additional lumbar cushions and headrests to create a playful, friendly space with room for eve-ryone. And a tip for parents: choose a washable cover, just in case.



Sigge

Comfort all around, that's what Sigge is about. Want to use the armrest as your backrest? No problem, we've made both just as soft and comfy. And thanks to the modular design, you can create your own arrangement, including your choice of legs and fabric or leather cover.

Design: Steven Schilte.



Stina

Stina is very likely the ultimate sofa bed in disguise. With a welcoming rounded shape and generous expression, Stina will be equally appreciated for its strikingly modern visual looks as for its practicality and high comfort. Stina is voluminous, looks inviting, and when converted into a bed, you will be surprised that the sleeping comfort is no different to the comfort of a real bed! No wonder it is a pleasure to rest both eyes and body on this model.

Design: Böttcher & Kayser.



Teddy

Has comfort ever looked better? The distinctive quilt that covers the seat, armrests and cushions of Teddy is an invitation to enjoy. Customize the sofa or armchair to your tastes by choosing wooden or metal legs, standard or lux comfort and your type of cover (fix or loose with velcro).

Design: Steven Schilte.



Uma

An armchair design flirting with the 70s. With a strong identity of imagination, playfulness, style and perfect proportions. This contemporary classic is unique in its character and yet it can blend in with a great variety of spaces and interiors. Make a choice between classic round legs, or a discreet and elegant swivel. Use your imagination and explore the variations of fabrics and watch Uma transform in front of our eyes!

Design: Steven Schilte.



Ville

Bold, confident and comfy. Ville claims its space like few others. To add to the personality it comes in two versions – with or without buttons. And to really make your mark why not go for piping in a contrasting colour?

Design: Ian Archer.



